

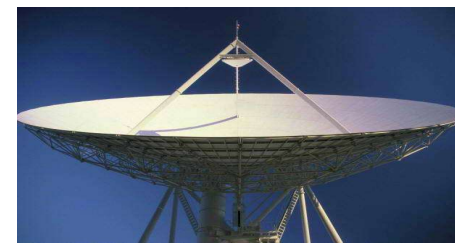


**DIAMOND**

**Diamond Electronics HK Co Ltd**

**China Parent Company**

**JieDong Diamond Technology Electronics Co., Ltd**



**Diamond Electronics HK Co Ltd**

**Flat M-N, 24/F, Houston Industrial Building, 32-40 Wang Lung Street, Tsuen Wan, NT, Hong Kong**

**Tel: +852-2490 1970 (Hong Kong)**

**Fax: +852-2402 1901 (Hong Kong)**

**JieDong Diamond Technology Electronics Co., Ltd**

**Jinxinbei Road North, Green Industrial Park, Jiedong, Jieyang City, Guangdong,**

**China Tel: +86-663-3278-145 (China)**

**Fax: +86-663-3273-425 (China)**

**<http://www.diamondelect.com.hk>**





# Company Presentation



## Development Milestones

In 1993: Diamond Electronics (HK) Co., Ltd. (founded in Hong Kong)

In 1996: Jieyang Diamond Electronics Co., Ltd. (WOFE)

Year 1996 - Front view



Year 2000 - Land area : 20,000 square meters



In 2002: ISO9001-2000 certificate awarded.

In 2002: Qualified supplier to JVC (Japan)/ FUNAI(Japan)

In 2003: Business partner to Jalco (Japan)

Qualified supplier to Panasonic (Japan)

In 2004: Business partners to Koei Precision (HK) Co., Ltd (Japan)/HHH (HK) Co., Ltd

Qualified supplier to SATCOM tycoon Skyware (Germany)

Qualified supplier to FOSTER(Japan)



Year 2004 – Land area : 250,000 square meters  
Build-in area: 50,000 square meters

In 2005: Qualified supplier to SKY (UK)

In 2005 : ISO14001-1996 certificate awarded

In 2006: Jiedong Diamond Plastic and Metal Parts Co., Ltd

In 2007: Beijing Diamond Wireless Technology Co., Ltd

Qualified supplier to HITACHI(Japan) / Pioneer(Japan)



Start to produce satcom products

In 2008: Qualified supplier to Newtec

In 2009: ISO/TS16949:2002 certificate awarded.

In 2010: Diamond and Koei Precision (Japan) / Daiwa(Japan) established the joint venture of Join Star Electronics Co., Ltd.

Qualified supplier to BKTEL(Germany)



In 2011: Business partner to JIN Corp (Japan)

In 2012: OHSAS18001 occupational health and safety management system certificate awarded

In 2013: Qualified supplier to SKG (American)

In 2014: Qualified supplier to Jabil and Celestica

In 2016: Global Invacomm (UK)

In 2017: Amplus Communication Pte Ltd

In 2018: Qualified supplier to ST Engineering

In 2019: Qualified supplier to Celestica and AMTEK

In 2020: Awarded as Tier one supplier to Hosiden



# Company Road Map



Full view of company



**Location:**

Fenghung Road North, Green Industrial Park, Jiedong, Jieyang City, Guangdong, China

**Traffic:**

**350 Km from ShenZhen to Diamond ShenShan freeway**

**From ShenZhen or Hong Kong to JieYang:**

ShenShan freeway → JiePu freeway → Shanmei freeway → (Putian exit).  
4 1/2 hours travel by Car, 5 minutes from Putian exit to company.

*2 hrs from Shenzhen to company through Shenxia high-speed express*

50 mins from HongKong to Jieyang by air

50 mins from GuangZhou to Jieyang by air

20 mins from Chao Shan airport to Diamond



Completing Plan



Area of plant: 250,000 square meters

Build-in area: 50,000 square meters



# New Plant



Over the years, our hard-earned reputation has allowed us to grow and respond to the needs of our customers. We rate customer satisfaction as a top priority. We guarantee a rapid turnover on all projects.

### **Culture:**

Diligence on endeavor, diligence on learning, diligence on development, diligence on education.

Faithfulness on reception, faithfulness on evolution, faithfulness on service, faithfulness on Contribution.



### **Quality Policy:**

Quality represents the wisdom of Diamond, It's Diamond's mindset is to achieve "Zero" ppm. Commit to the pursuit for zero-defect through PDCA.

### **Company Goal:**

To be a world leading EMS service company

### **Environment Policy:**

Our Aim is to produce products cleanly and safely, To offer green products, that have a low environmental impact To observe strict compliance with environmental legislation and other requirements, such as approved codes of practice. With a commitment to improving our environment.

### **SERVICES AND SUPPORT**

World Class Service at a very reasonable price

### **Professional Services**

Our customers are always number one regardless of the size of the job. Our people are highly trained to provide the world-class professional service to ensure that [we take manufacturing trouble away from your daily life.](#)

### **Technical Services**

We have a qualified staff of experienced engineers to provide you technical assistance on [material selection, tool design, and also to provide feedback on cost reduction/design improvements.](#)

### **Design Services**

Concept to final production mechanical design

### **Shipping & Documentations**

We produce & ship over 15 million parts every year therefore; we understand the necessary documentations & import/export requirements of various countries.

# Company's Qualification



**TS 16949  
(2009)**



**ISO 14001  
(2005)**



**ISO 9001  
(2003)**



**OHSAS 18001  
(2012)**



# Certificates & Awards



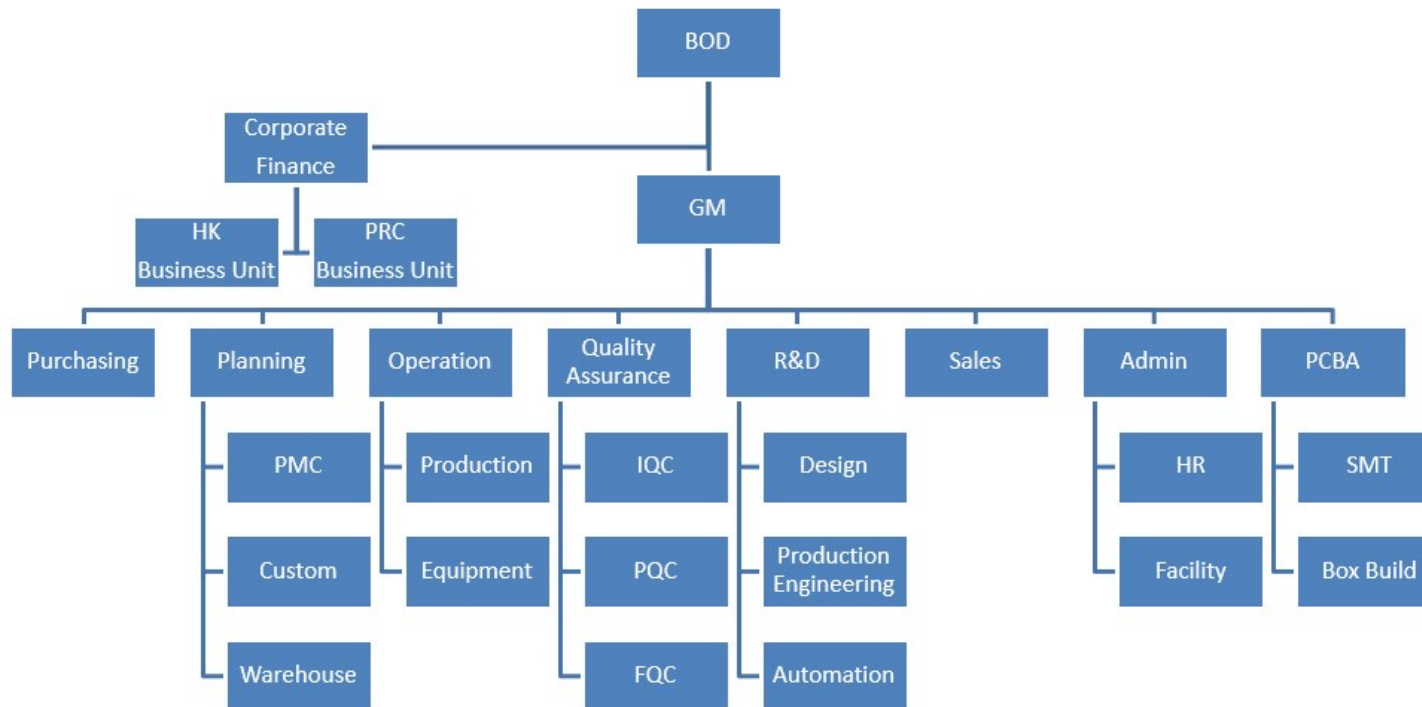
Number of staff (Jan. 2020)

	Board of Directors	2
	Department manager	5
	Administrative	5
	Engineering	24
	Technician	10
	QC	42
	Production Management	5
	Direct worker	394
	<b>Total</b>	<b>487</b>



- . ISO9001-2000 No. QHK01499 - 2003 China <SGS>
- . Bank of China AAA Credit Rating - 2003 China
- . China Custom A-Type Enterprise - 2003 China <CCS>
- . Star Enterprise in Guangdong - 2004 China
- . Plating and Surface Treatment License - 2004 China
- . ISO14001-2004 No. CH05/0159 - 2005 China <SGS>
- . Taxation glory enterprise in Jieyang city - 2005 China
- . Designated Supplier for the Nationwide Distance Education Project - 2005 China <CED>
- . High-tech enterprise in Guangdong - 2006 China
- . License to import and export Satcom products - 2006 China
- . License for domestic sales of Satcom products - 2008
- . ISO/TS16949: 2002 China <SGS>
- . OHSAS18001: 2007 occupational health and safety management system -2012 China

# Organization Structure

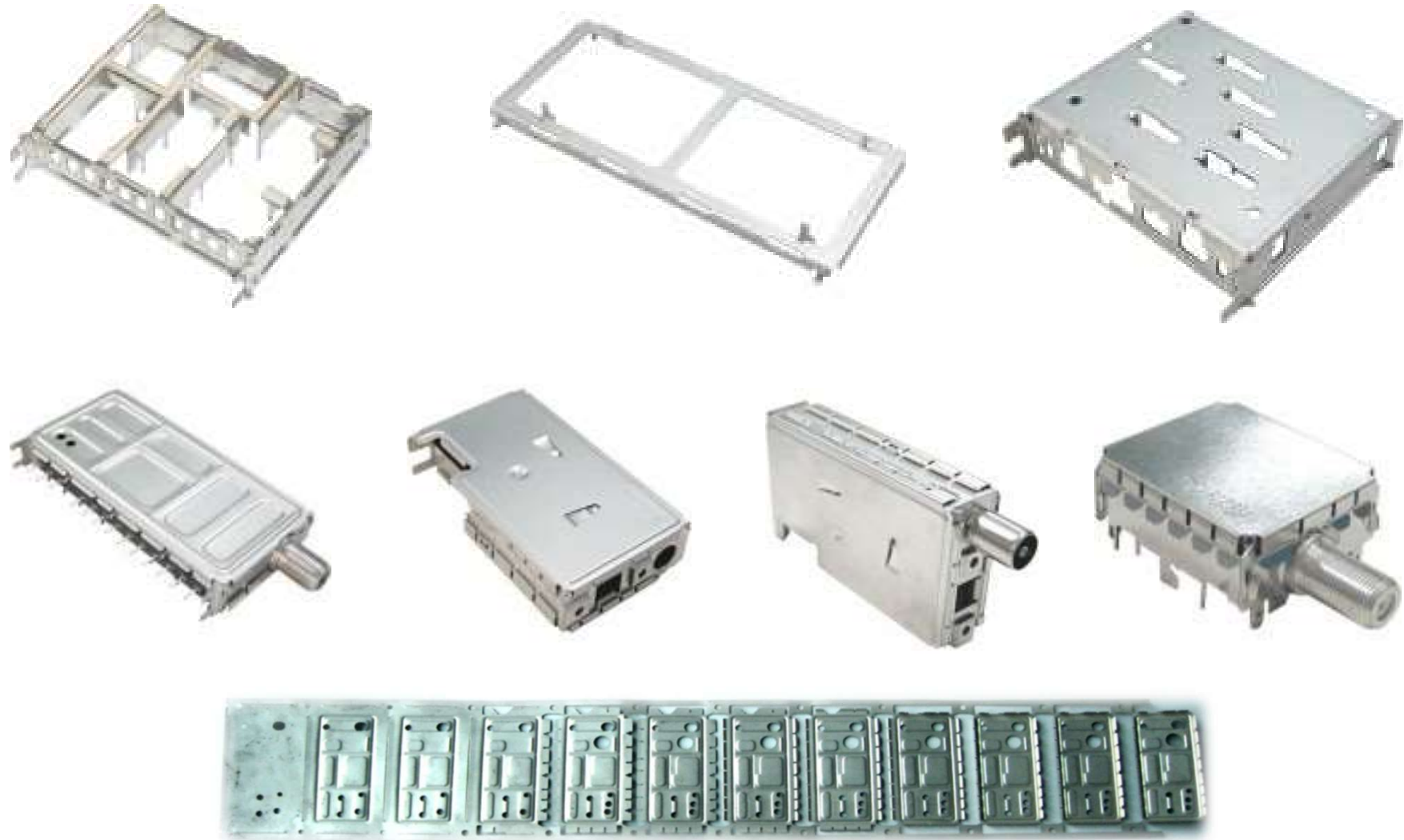


# Product: Connector





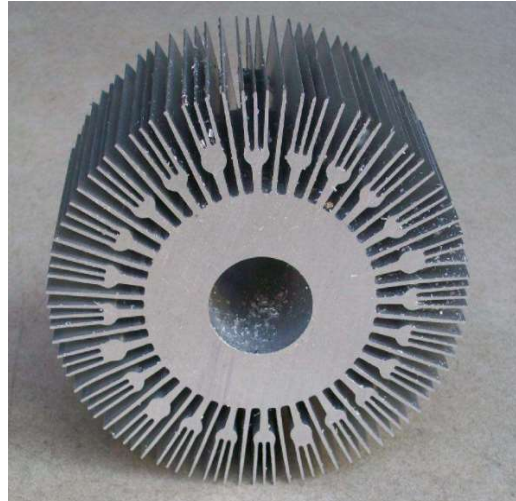
# Product: Metal Stamping Assembly Part



# Product: Heat Sink



Extruded Heat Sink (Material: A6063)



Cold Forged Heat Sink (Material: 1017)

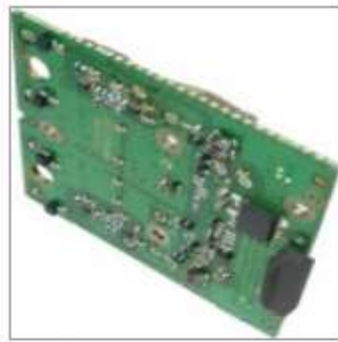


Monthly Capacity: 1 Million pieces

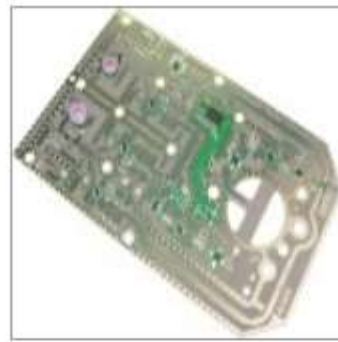
# Product: Die Casting Parts



# Product: SMT + PCB Assembly + Box Build



3112 298 52562



3112 298 53102



3112 298 53271



3112 298 53301



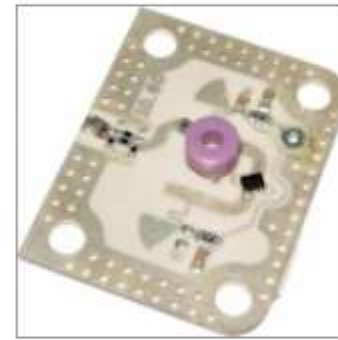
3112 298 53321



3112 298 53391



3112 298 53421



3112 298 53441



3112 298 53471



3112 298 53301

# Product: Satellite Communication Device





**Air Purifying Machine**



**Multifunctional Ozone Machine**



**Massage Chair**



**Magnetic Massage Comb**



**Anion Air Purifier (Portable)**



**SMART Magnetic Massage Comb**

# Metal Stamping Machines

**Heavy Stamping: 29 sets in total**

Press tonnage	QTY	Manufacturer
400t	1set	Guangdong
300t	5sets	Guangdong
250t	4sets	Taiwan, Guangdong
200t	7sets	Taiwan, Guangdong
160t	2sets	Taiwan
125t	4sets	Jiangsu, Shanghai
110t	6sets	Taiwan, Shanghai

**Other stamping: 25~100 ton 100sets**

400 Tonnage Stamping Machine



Loader



160 Tonnage Stamping Machine



**Precision stamping:**

Ensure precision of 0.02mm and surface level of 0.05mm with assistant sets

Installed monthly Capacity: **100 Million pcs**

60 Tonnage Round Guide pillar High-Speed Stamping Machine



20 Tonnage Stamping Machine



35 Tonnage High Precision Stamping Machine



## Die-Casting Machines (Zn/Al Alloy)

### Die-Casting Machine

Press tonnage	QTY	Manufacturer
450t	1 set	Guangdong
280t	2 sets	Guangdong
260t	1set	Guangdong
150t	2 sets	Guangdong
80t	4 sets	Guangdong

Monthly Capacity: **45 Million pieces**

### Post Operation After Die-Casting

Equipment name	QTY	Manufacturer
CNC Machine	3sets	Taiwan
Sand-blasting Machine	5sets	Taiwan
Multi-axis automatic tapping machine	9sets	Taiwan
Multi-axis Driller	5sets	Taiwan
Powder coating and drying	2 lines	Japan/Switzerland
Soakage Equipment	1line	Britain
Cleaning	1 line	China

Monthly Capacity: **45 Million pieces**

Die-casting Workshop



Chromate finishing & Porous sealing



Static powder spray equipment



Carving Machine



CNC Machining



Sandblasting





# Plastic Injection

## Plastic Injection Machine

Press Tonnage	QTY	Manufacturer
280t	1set	Guangdong
200t	1set	Guangdong
150t	1set	Guangdong
140t	1set	Taiwan
88t	1set	Taiwan
80t	1set	Taiwan
50t	1set	Japan

Monthly Capacity: **30 Million pcs**



## Plastic injection Workshop



## Ultrasonic Cleaning Machines for Metal Stamping Products

**Ultrasonic Cleaning Machine:** 8 lines  
**precision ultrasonic automatic cleaning machine:** 1 line  
**Cleaning line:** Installed monthly capacity of cleaning: 20 Million PCS



## Lathe Equipments

### Lathe Equipments

Name	QTY	Manufacturer
Mini-numerical control lathe	7sets	Zhejiang
Automatic roll tapping machine	15sets	Taiwan
Automatic plastic machine	9sets	Guangdong
Manual instrument lathe	27sets	Zhejiang
Automatic cutting machine	18sets	<b>DIAMOND</b>
Automatic inverse corner machine	12sets	<b>DIAMOND</b>
Automatic rivet H-form machine	6sets	<b>DIAMOND</b>

Monthly capacity: **25 Million pieces**

Mini-Numerical Control Lathe



Automatic Rivet H Forming Machine



Automatic Cutting Machine



## SMT + PCB Assembly Line



(AOI) Automated Optical Inspection  
 PCBA Manufacturer (Layers 1-8) SMT, Thru-Hole, With Single And Double Sided Reflow  
 No-Clean And Water Soluble Flux.  
 Lead-Free / Rohs Compliant Wave Soldering.  
 PCBA With RF Matching And Electronic Tuning  
 Pick And Place For Chip Packages (0201 Components)  
 High Speed, Flexible Surface Mount Assembly Lines.  
 Through-Hole Assembly Lines.  
 High Speed / High-Accuracy Pick And Place Systems.  
 Fine Pitch And High Density PCBs.  
 Functional Certification Test (FCT)  
 Hi-Pot Reliability Test / Firmware Programming  
 Analog, Digital, And Mixed Signal Functional Test



## Machine Automation Development

In order to eliminate none value activities, meanwhile create cost effective product solution, our automation division research and develop fully automated assembly line that integrated with grinder machine, milling machine, drilling machine, lathe machine and many more.

### Fully Automated Machine



### Products From Automated Machine



## Equipments of Tool-Making

### CNC Machine: 2 sets

Name	Manufacturer	QTY	Precision	Work platform scope	Cutter capacity
LlweiV-30	Taiwan	1	±0.008	760*410*400(mm)	20
DawanR510	Taiwan	1	±0.01	510*400*450 (mm)	12

CNC Machine



### Wire-Cutting Machine: 3 sets

Name	Manufacturer	QTY	Precision	Work platform scope
Shadike AQ560L	Japan	1	±0.005	560*350*300
Shadike AQ550L	Japan	1	±0.005	550*350*320
Bother HS-50A	Japan	1	±0.006	410*260*170
Perforation machine	Suzhou	1		200*250

Wire Cutting Machine



Electrical Discharge Machine



### Electrical Discharge Machining: 5 sets

Name	Manufacturer	QTY	Precision	Work platform scope
Shadike AQ35L	Japan	1	±0.005	350*250*250
Libai JM322	Taiwan	2	±0.01	320*200*250
Lain jin xin feng SA-ZIC450	Taiwan	1	±0.01	450*300*250
Lian sheng LS350	Taiwan	1	±0.01	350*250*250

Grinding Machine (Wet)



### Other Machineries:

- Wire-Electro Discharge Machine (High Speed): 8 sets;
- Grinder: 11 sets;
- Milling Machine: 7 sets;
- Drilling Machine: 5 sets;
- Lathe Machine: 2 sets

# Grinding Machines



## Precision Surface-grinding machines Total: 3 sets

Equipment Name	Manufacturer	QTY	P/N	Plane precision	Principal axis run-out precision	Z axis vertical precision
Sanjing surface-grinding machine	Japan	1set	MSG	0.002mm	0.002mm	0.01mm
Fuyu surface-grinding machine	Taiwan	2sets	618SP	0.002mm	0.002mm	0.01mm

## Precision Optical-grinding machine : 1 set

Equipment Name	Manufacturer	QTY	P/N	Plane precision	Principal axis run-out precision	XYZ axis precision
WAIDA	Japan	1set	PGX-2500sp	0.0005mm	0.001mm	0.002mm



# Testing Equipments



## Measurement System & Equipments

Equipment name	Equipment name
3D-Meas. Equipment	RF Functional tester
Plating Thickness Tester	Network Analyzer
RoHS Tester	Software Tester
Projection Machine	Spectrum Analyzer
Height Gauge	Temperature Chambers
Microscope	Low-temp meter
TV Microscope	Hi-temp meter
Digital Torsion Meter	Screw thread gauge
Insulation Tester	Temperature Data Collector
Low Voltage DC tester	Plug gauge
LRC Meter	Screw Thread Plug Gauge

3D-Measurement Equipment



Projector



Climate Chambers



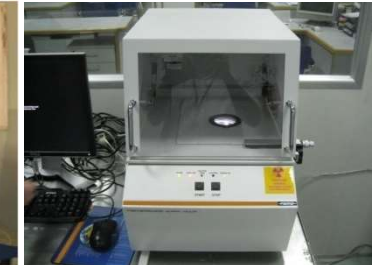
Oscilloscope



RF Functional Tester



Plating Thickness Tester



RoHS Tester



## Other Facilities

### Screw-Type Air Compressor: 12sets

Horsepower	QTY	Manufacturer
55Hp	1set	Japan
50Hp	3sets	Shenzhen
37Hp	3sets	Japan
30Hp	5sets	Shenzhen



### Diesel Generator: 5 sets

Power	QTY	Manufacturer
650KVA	1set	China
240KVA	3sets	China
120KVA	1set	China

### Forklift: 9 sets

Weight	QTY	Type
5.0t	1	Diesel oil
3.5t	4	Diesel oil
3.0t	1	Diesel oil
2.5t	1	Diesel oil
1.2t	2	Electric Power

Main Customers:





**E N D**

---

**T H A N K Y O U !**

---